



Indian School Al Wadi Al Kabir

Post Midterm Examination (2024-2025)

Class: VIII
Date: 01-12-2024

Subject: Science
Set -I

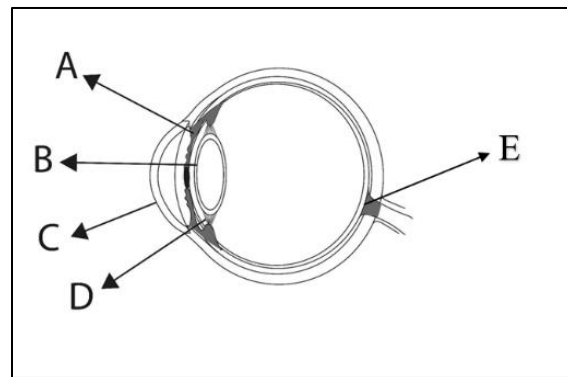
Max. Marks: 30
Time: 1 Hour

General Instructions:

- All questions are compulsory. Marks are indicated against each section.
- The question paper comprises of **4** pages and **15** questions in 5 sections A, B, C, D and E.
- Q 1 to Q 4 in **section A** -MCQ carries ONE mark each. Write the correct answer along with the option in the answer script.
- Q 5 to Q 7 in **section A** -Assertion and Reason type and carry ONE mark each.
- Q 8 to Q 10 in **section B** are Short Answer Type Questions and carry TWO marks each.
- Q 11 TO Q 13 in **section C** are Short Answer Type Questions and carry THREE marks each.
- Q 14 in **section D** is a Long Answer Type Question and carries FIVE marks.
- Q 15 in **section E** is a Case Study/Paragraph Question and carries THREE marks.
- Write the same question number as given in the question paper.
- Whitener should not be used in the answer script.
- Diagrams should be drawn using a pencil.

SECTION A (7X1=7)

1. Which of the following statements are correct regarding the structure and functions of parts of human eye as shown in the figure?



- A gives the eye its distinctive colour.
 - B focusses light on the back of the eye.
 - C controls the amount of light entering into the eye.
 - D is responsible for sharp and detailed vision.
 - E has no sensory cells.
- (a) (iii) and (iv) only.
(b) (ii), (iv) and (v).
(c) (i), (ii) and (v).
(d) (ii) and (iv) only.
2. During the procedure of cloning Dolly, a normal body cell was collected from the 'X' of female Finn Dorsett sheep and 'Y' was obtained from Scottish Blackface ewe. The 'X' and 'Y' respectively are:
- (a) ovary and egg cell.
(b) mammary gland and sperm.
(c) mammary gland and egg cell.
(d) bone marrow and zygote.

3. Which of the following is not an advantage of using manure over fertilizers?
- (a) Manure enhances water retaining capacity of the soil.
 - (b) Manure is nutrient specific.
 - (c) Manure improves the texture of the soil.
 - (d) Manure makes the soil porous.
4. Identify the kind of agricultural implement and the practice, depicted in the picture given alongside.
- (a) Seed drill; sowing
 - (b) Leveller; levelling
 - (c) Cultivator; ploughing and levelling
 - (d) Combine; harvesting and threshing



For the following questions, two statements are given- one labelled Assertion (A) and the other labelled Reason (R). Select the correct answer to these questions from the codes (i), (ii), (iii), and (iv) as given below:

- (i) Both A and R are true and R is the correct explanation of the assertion.*
- (ii) Both A and R are true but R is not the correct explanation of the assertion.*
- (iii) A is true but R is false.*
- (iv) A is false but R is true*

5. **Assertion(A):** Hens and ducks are called oviparous animals.

Reason(R): Oviparous animals lay eggs.

6. **Assertion (A):** Weeds are unwanted plants that grow along with the main crops.

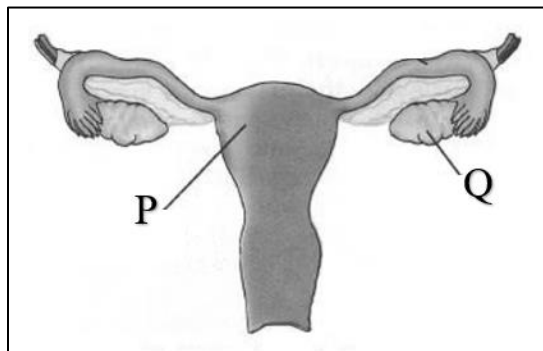
Reason (R): Weeds compete with the main crops for water, minerals and sunlight and therefore reduce crop yield.

7. **Assertion (A):** The lens of the human eye forms a real, erect image of an object on the retina of eye.

Reason (R): The human eye lens is convex in nature.

SECTION B (3X2=6)

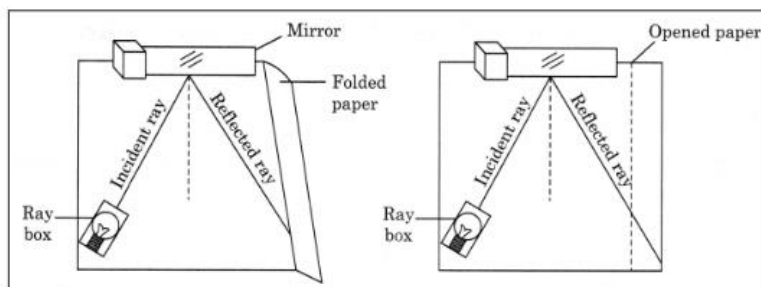
8. Identify and label the parts P and Q of female reproductive system. Mention the functions of the labelled parts.



9. What is crop rotation? How does it help in replenishing the fertility of the soil?
10. Explain in detail, the term in vitro fertilisation and the later development of zygote and the embryo.

SECTION C (3X3=9)

11. (a) What does the following activity demonstrate?



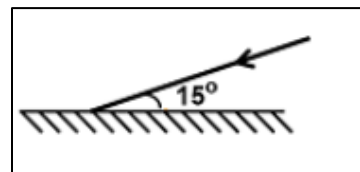
- (b) Calculate the number of images formed when two plane mirrors are inclined at an angle of 120° .
- (c) On what principle does the periscope work? What is it used for?
12. (a) What is metamorphosis? Give an example.
- (b) Which multicellular organism reproduces asexually by budding? Draw neat labelled diagrams.
13. (a) Distinguish between Kharif and Rabi crops.
- (b) The soil needs to be turned and loosened before growing a crop? Give two reasons.

SECTION D (1X5=5)

14. (a) What is cataract? How is it treated?

(b) Write the difference between regular and diffused reflections. Draw neat labelled diagrams.

(c) If a ray of light strikes a plane mirror at an angle of 15° with the mirror, find the angle of reflection of the light ray.



SECTION E (1X3=3)

15. Read the following passage and answer the questions given below.

Water is absorbed by the plant roots. Water is essential because germination of seeds does not take place under dry conditions. The supply of water to crops at regular intervals is called irrigation. The time and frequency of irrigation varies from crop to crop. In summer, the frequency of watering is higher. It could be due to the increased rate of evaporation of water from the soil and the leaves. The various traditional ways of watering plants are moat (pulley system), chain pump, dhekli, and rahat (lever system).

Modern methods of irrigation involve a main water supply connected to water pipes that have nozzles or holes at regular intervals. These water pipes are placed alongside the crop plants. When required, the main water supply flows through the nozzles or holes to the crop plants. Sprinkler system and drip system are two types of modern methods of irrigation.

(i) Crops need to be watered more in summer. Give a reason.

(ii) Mention two traditional methods of irrigation.

(iii) What is the advantage of drip system of irrigation?